



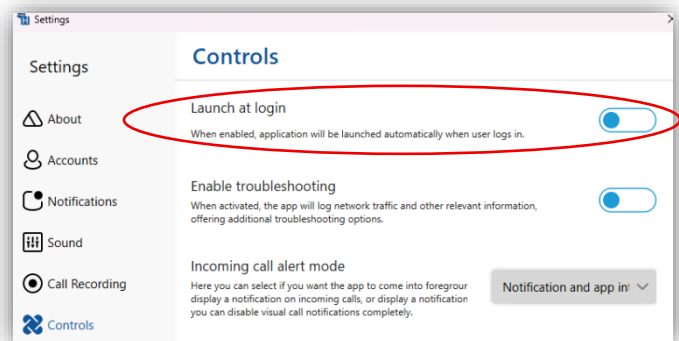
Crosswind Huddle

How to Launch Huddle Automatically at Startup

V1.2

If you would like Huddle to launch automatically when you log into your Windows or MAC computer, follow the steps below to go into Settings->Controls and enabling the option “**Launch at Login**”.

1. Go to **Settings** and then click on **Controls**.



2. The first option listed is “Launch at Login. To **enable** the option, slide the toggle to the right by clicking on the icon. The image below shows the option enabled. Huddle will now start automatically when you log into your Windows or MAC computer.

Launch at login

When enabled, application will be launched automatically when user logs in.

